



 NEWSKILL

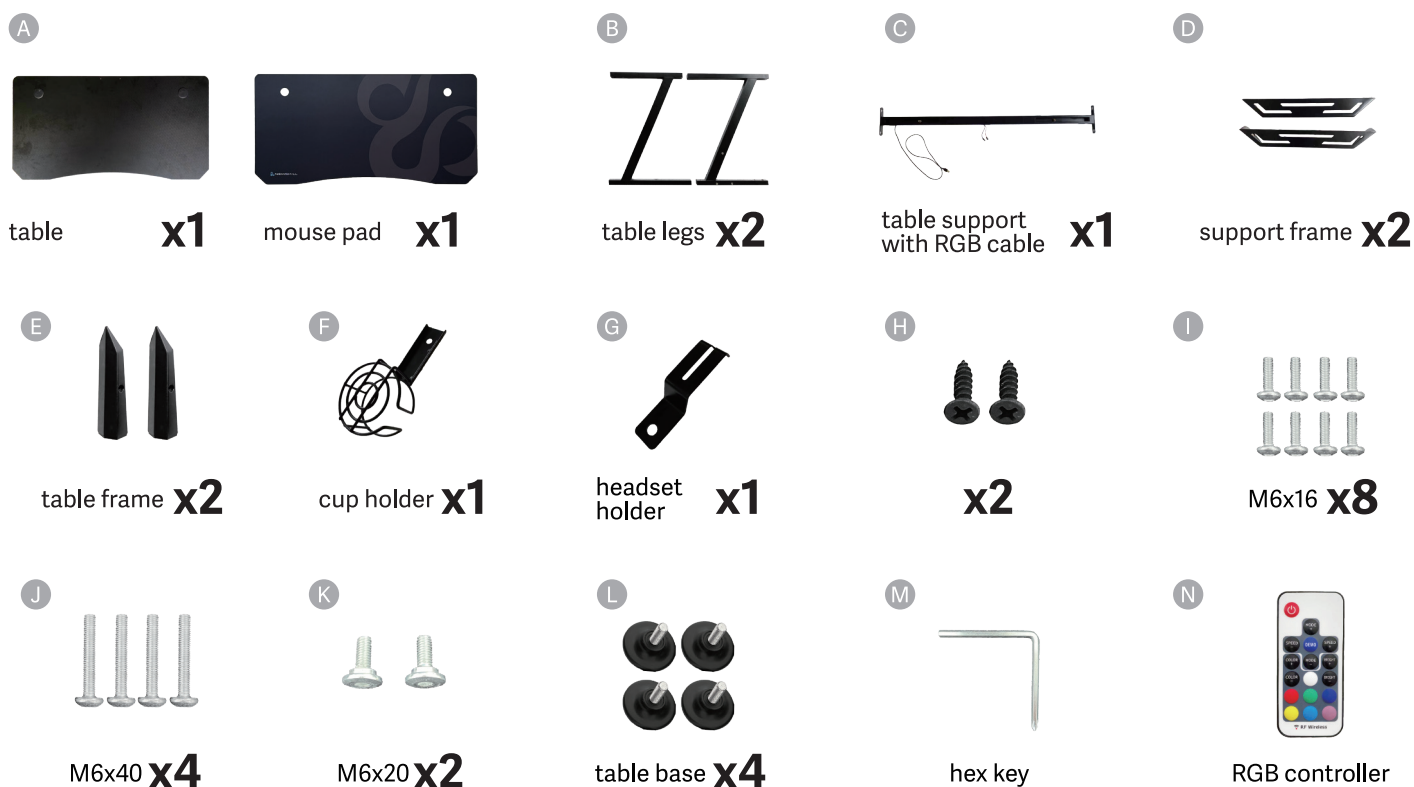
ANHUR RGB

INSTRUCTION GUIDE

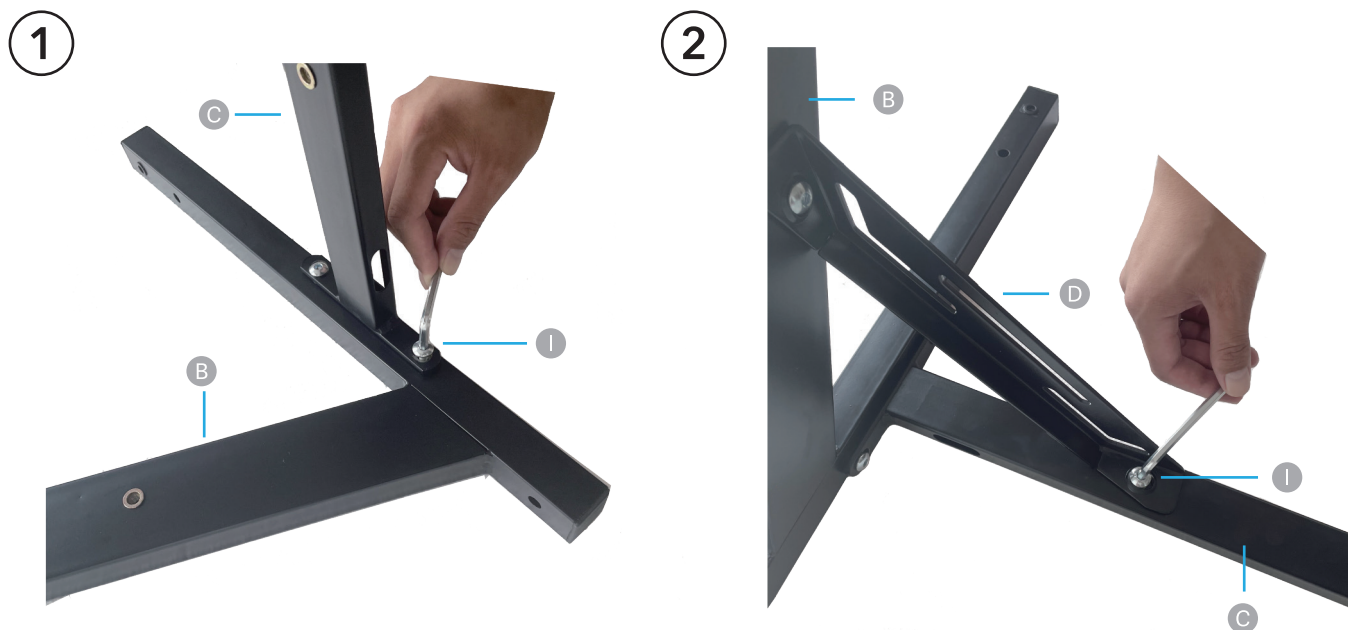
ANHUR RGB

INSTRUCTION GUIDE

COMPONENTS



MOUNTING STEPS



Fasten both table legs and brackets with screws & hex key

Fasten the support frame with screws & hex key

4

Install the height-adjustable table base

L

Fasten the table legs and the table board with screws

J

K

Install the cup holder

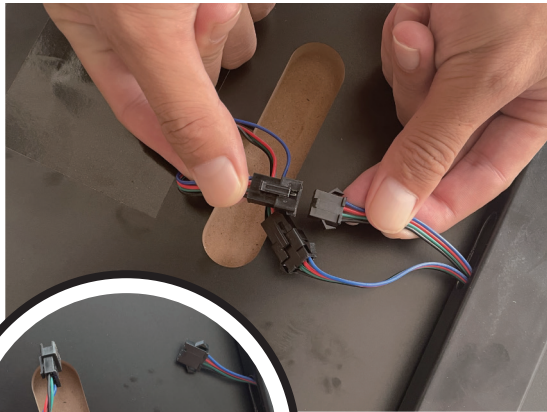
F

Install the headset holder

K

G

5



Connect the RGB Cable x2

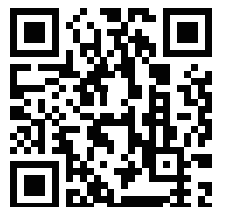
6



Fasten the table frame and put on the mouse pad to finish

GOT QUESTIONS?

Go newskillgaming.com





ATTENTION!

1. Verify all parts before assembly.
2. The pictures in this guide may not look exactly like your chair, but the instruction guide is the same regardless of model.
3. Before using the chair, please make sure all the bolts and screws are tightened.
4. At least every six months check all bolts and screws to ensure they are tightened.
5. Don not use this chair as a step stool/ladder.

GOT QUESTIONS?

Go newskillgaming.com



newskillgaming.com