
PRO
S E R I E S



NEITH PRO

PROFESSIONAL GAMING CHAIR

Flip this sheet over and you will find a quick start guide to assemble your chair.
We highly recommend checking out our assembly video for even more detailed and visual instructions.



MORE INFORMATION AT
WWW.NEWSKILLGAMING.COM

BEFORE ASSEMBLING



Having a friend to help makes assembly extra-easy



Mind the important safety information

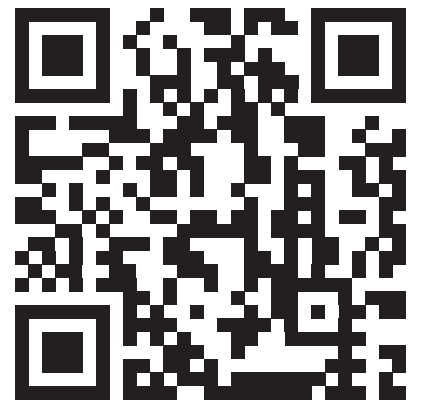


Contact us if you have any issues

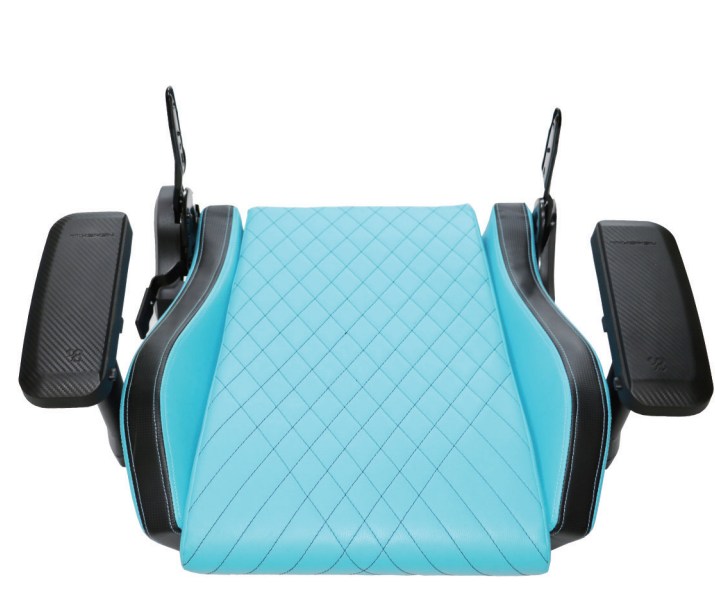
NOTE

Some parts may be different from the manual, please use the actual parts in the box.

NEWSKILL
MORE INFORMATION AT
WWW.NEWSKILLGAMING.COM



COMPONENTS



1 Seat



2 Backrest



3 Lumbar support



4 Head support



5 Mechanism



6 Base



7 Castors x5



8 Side Covers



9 Gas Lift Cover



10 Gas Lift



11 Hex key



12 M5x12mm Screws x2



13 Side Covers x2



14 Rubber Gasket x4

ASSEMBLY

1

Push and twist the wheels into the star base.



2

Place the gas lift cover over the gas lift.



3

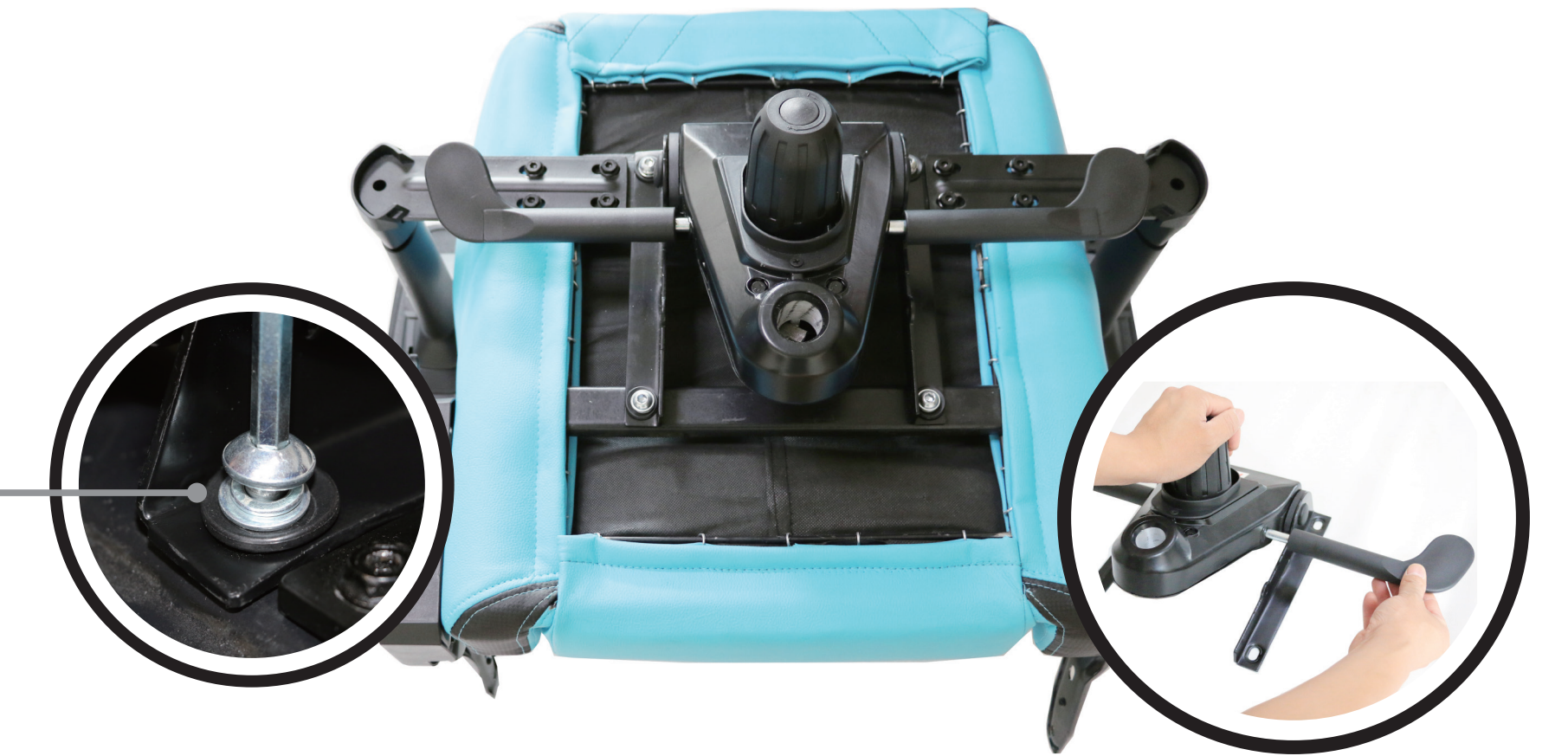
First insert the puller into the mechanism. Remove the screws on the base, align the butterfly mechanism with the screw holes at the bottom of the seat.



The arrow on the mechanism must be in the direction towards the front of the chair.

The Rubber Gasket

Rubber gaskets can reduce the noise when the chair is in motion. You can choose whether to install it.



4

Attach the seats to the base.



5

Remove the screws on the side of the back rest and fasten the adjuster on the seat.



6

Fasten the side cover with the screws provided



7

Fix the lumbar and head support cushions on the backrest to finish.

