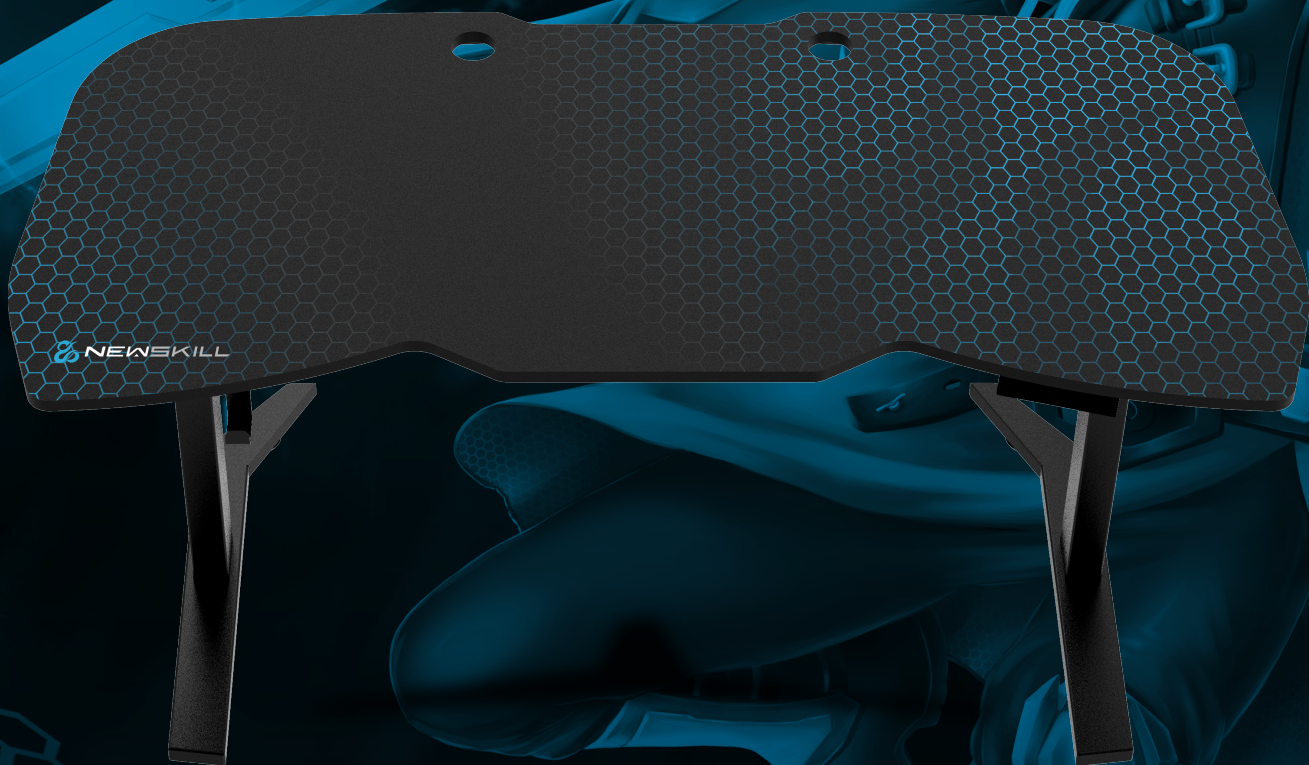


PRO
SERIES



 **NEWSKILL**

TANARIS RGB **PRO**

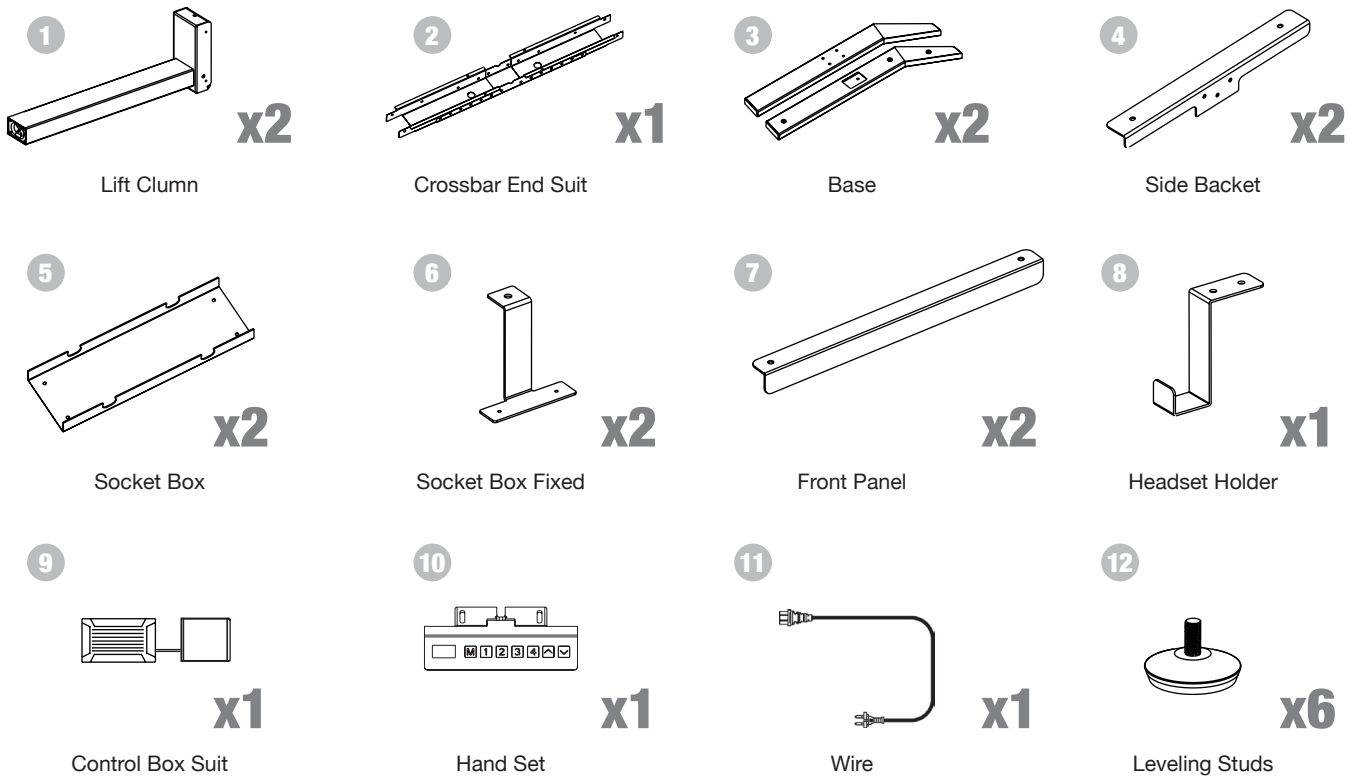
PROFESIONAL GAMING DESK

USER MANUAL

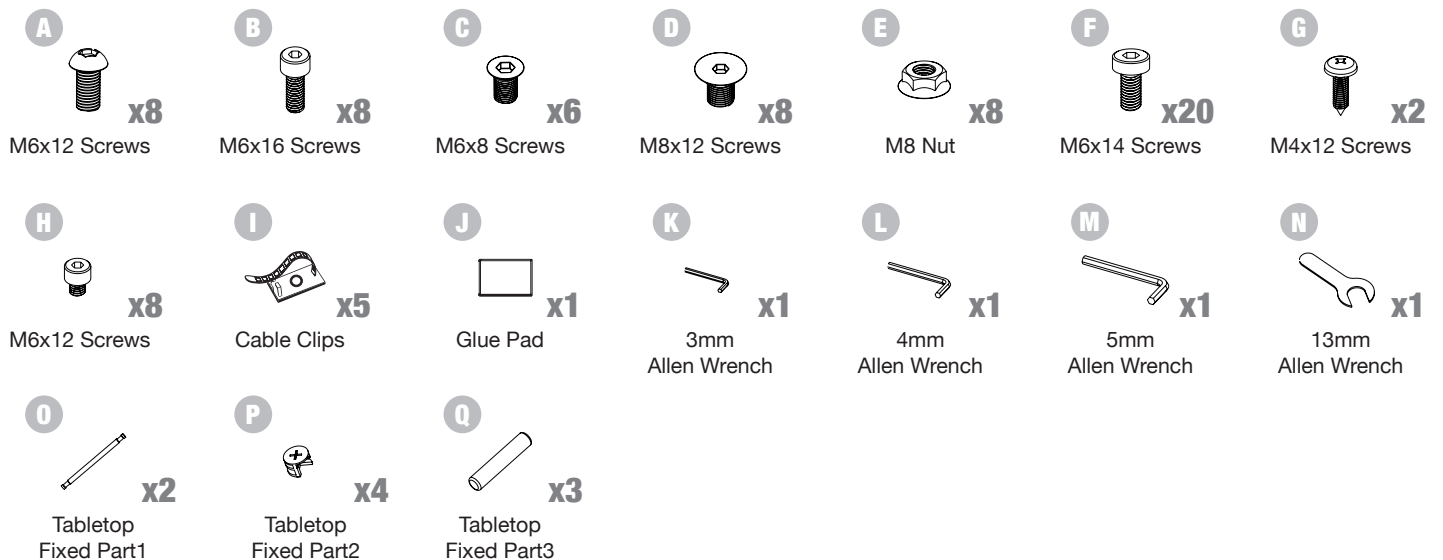
Installation Tips

Please don't tighten the screws completely and go back later for a final tightening of all the screws after pieces are aligned with each other.
Lay a mat or old blanket out to assemble onto so the floor and the furniture doesn't get scratched or damaged during building

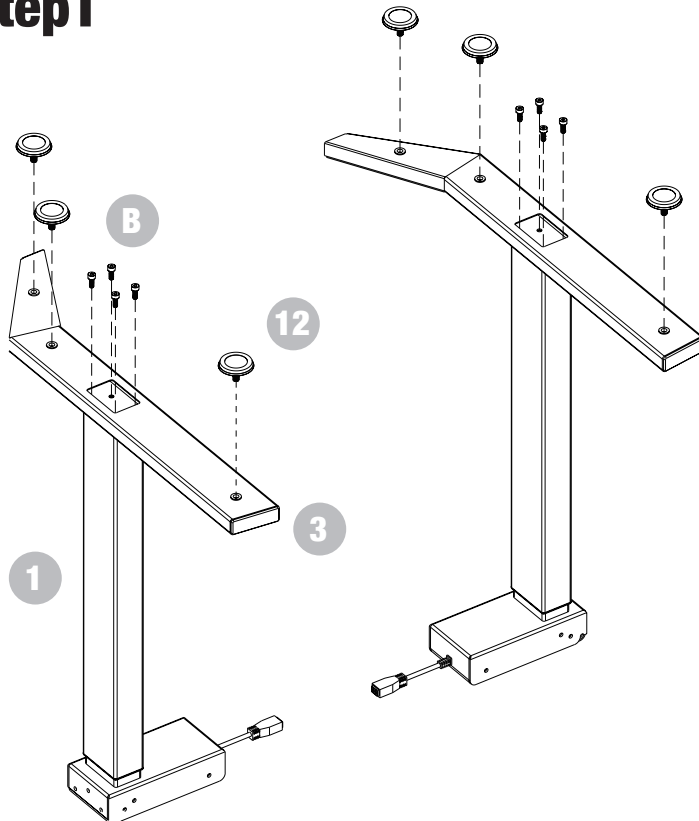
Part list



Accessory Kit

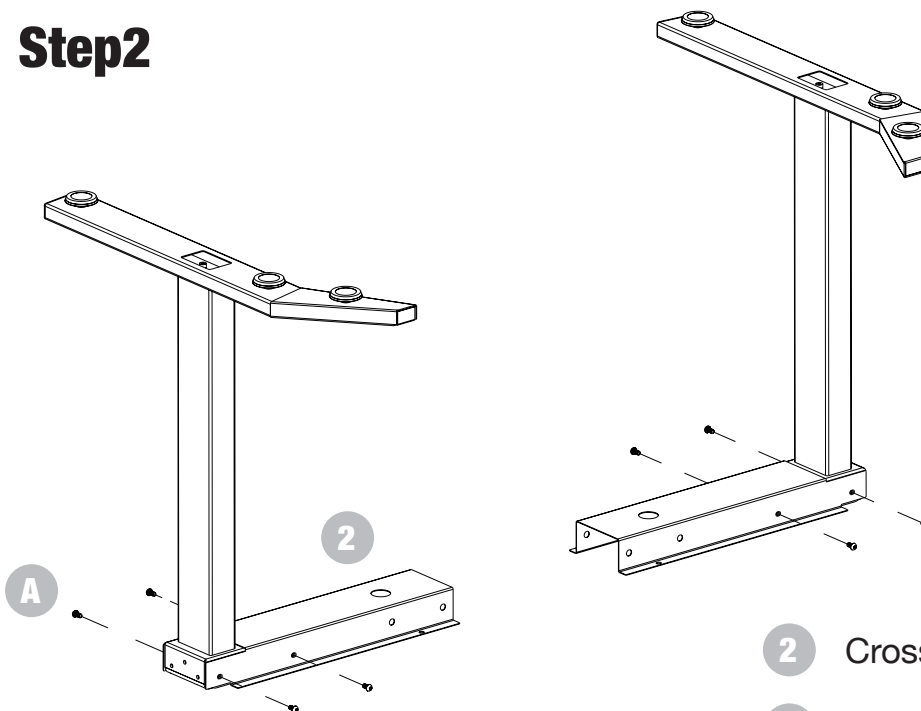


Step1



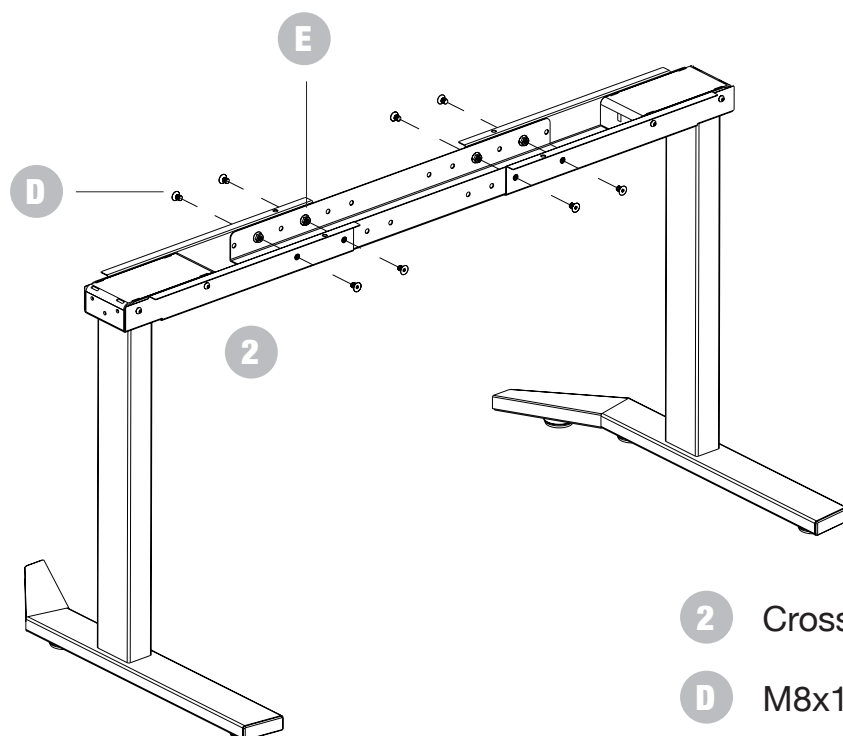
- 1** Lift Column x2
- 3** Base x2
- 9** Leveling Studs x6
- B** M6x16 Screws x8

Step2



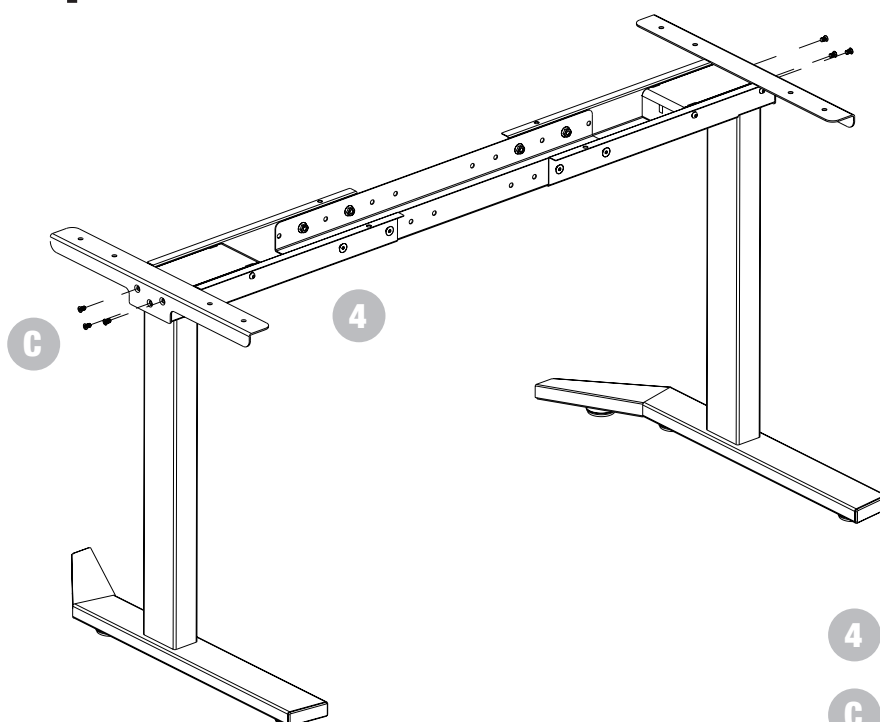
- 2** Crossbar End Suit x1
- A** M6x12 Screws x8

Step3



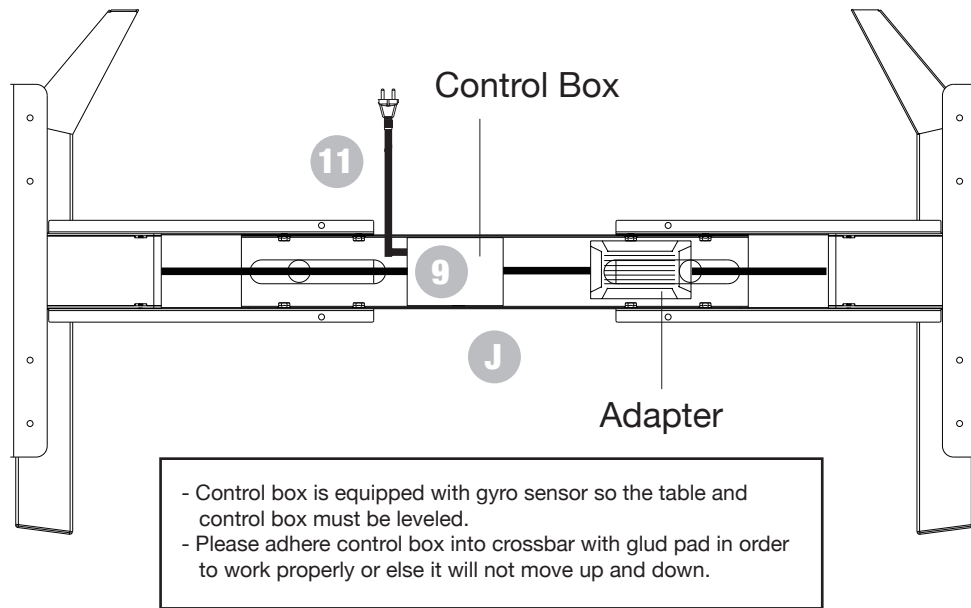
- 2** Crossbar End Suit x1
- D** M8x12 Screws x8
- E** M8 Nut x8

Step4



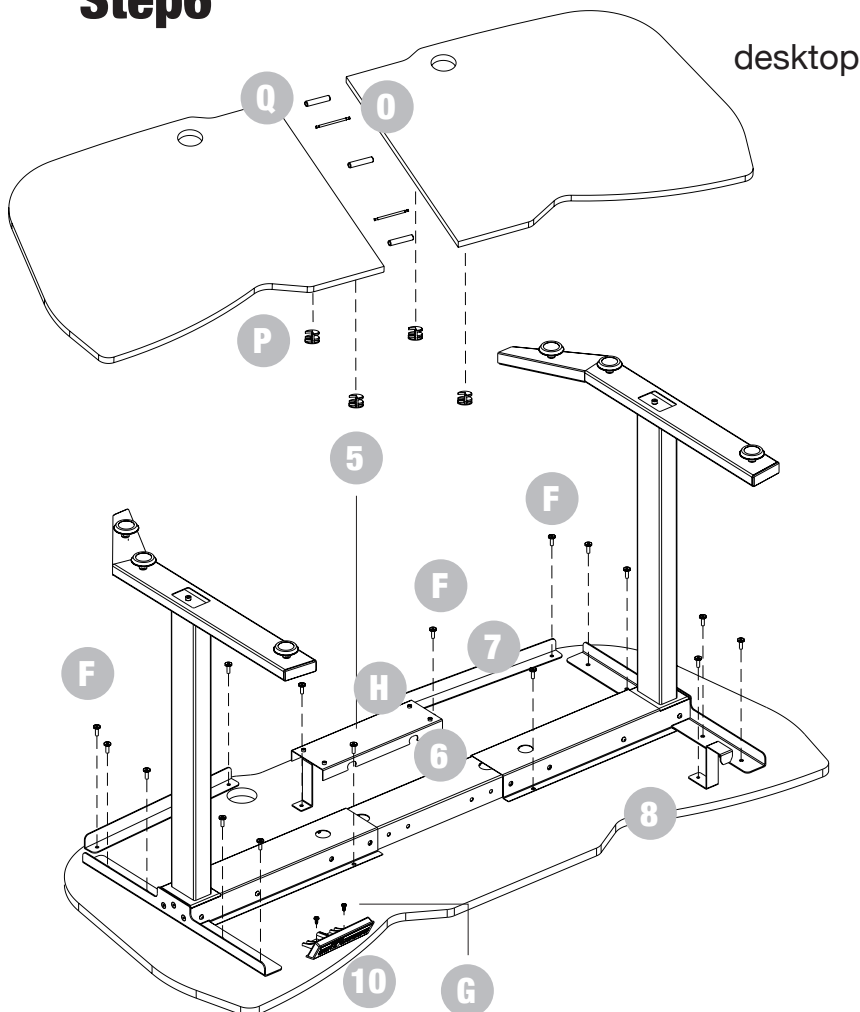
- 4** Side Backet x2
- C** M6x8 Screws x6

Step5



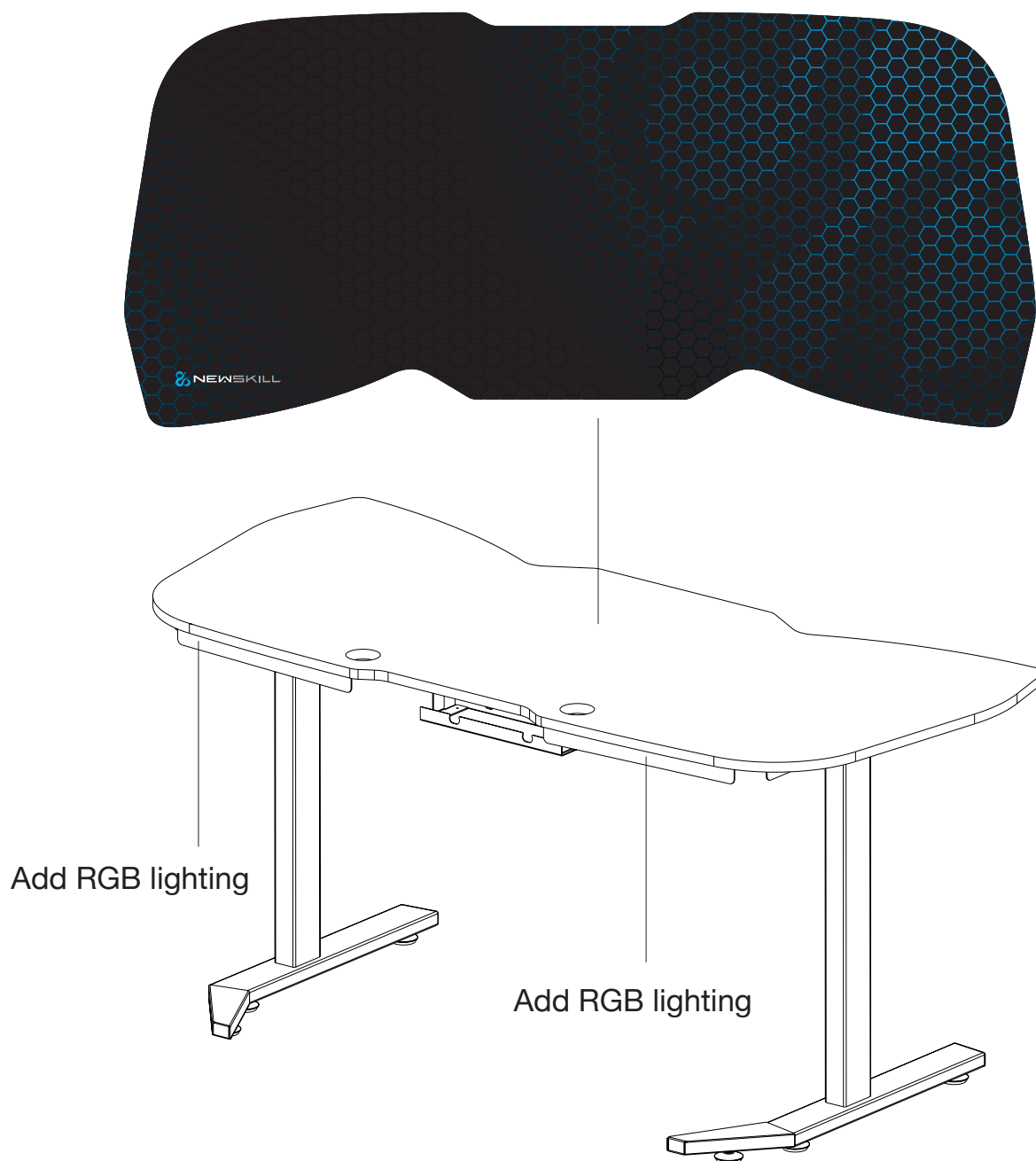
J Glue Padx1 9 Control Box Suitx1 11 Wirex1

Step6



5	Socket Box	x1
6	Socket Box Fixed	x2
7	Front Panel	x2
8	Headset Holder	x1
10	Handset	x1
F	M6x14 Screws	x20
G	M4x12 Screws	x2
H	H4x4 Screws	x4
O	Tabletop Fixed Part1	x2
P	Tabletop Fixed Part2	x4
Q	Tabletop Fixed Part3	x3

Step7



Ready to Use

Before Plugging the table into the outlet, make sure that

- The lift columns are level and set at the lowest position.
- All the screws are tightened, to avoid the desk making noise and wobbling.

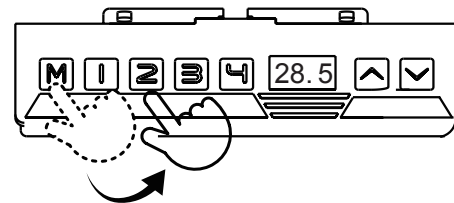
Activate the desk by following the next steps.

- Please press button down and hold for 10-15 seconds until it stutters and beeps.
- Release the button, then your desk is ready to use.

Operation Guide

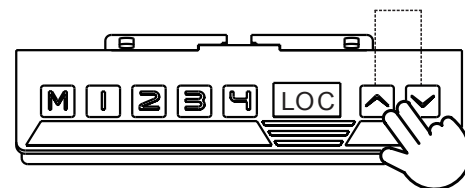
1. Memory desired height

- Press button "M", display show "S-" with flash.
- Press number and set desired position.



2. Advanced Safety feature lock and unlock the table.

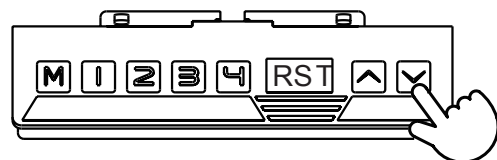
- Press button up and down at same time for 5 seconds, display "LOC"
- All single button will be inactive and table will be unable to move.
- Pressing button up and down together will unlock the keypad and release the LOC



3. Reset the table

When display show Error code or RST,
Please reset the table.

- Unplug the power cord from the control box.
- Unplug the cable that links the keypad to the control box.
- Wait 30 minutes and plug all the cables in again.
- Do the reset: please press button down and hold for 10-15 seconds until it stutters and beeps.



Press by holding
10-15 seconds

If the keypad displays HOT, please unplug and replug and let it cool off for a couple of minutes before proceeding again.



 NEWSKILL



MORE INFORMATION AT
WWW.NEWSKILLGAMING.COM