



 NEWSKILL

ARKADIA

WIRELESS BLUETOOTH GAMEPAD

USER MANUAL

Product Introduction

This gamepad is for PS4, Switch and compatible with PC.

For PS4 BT gamepad with touchpad/Six axis sensor/Speaker/Mic is also compatible with PS4.

For Switch BT Gamepad with six axis sensor is compatible with Switch.

PS: PS4 and DualShock4 are registered brand by Sony. Switch is registered brand by Nintendo.

Product Detail

Product Size: 160*mm103.38mm*58mm

Product Weight: 196g± 10g

Compatible: Full compatible with PS4 (same as original), switch and PC.

Connection Method: Connect via Bluetooth 2.1+EDR

Effect Distance: ≥10m

Battery: High Quality 850mA rechargeable Lithium Polymer Battery

Working Hour: 6-7H

Charging Hour: 2H

Working voltage and current: 3.7V 600MA

Charging Method: Micro USB cable

Mic/Headset: 3.5mm TRRS stereophonic hole, support mic and headset.

Vibration: Double Vibration

Sensor: With Six axis sensor function

Functions

Power ON Hold the Home button for 1 second to power on

Power OFF Under disconnect status, without any action the gamepad will goes to sleep mode.

Under connecting status, When close the console, it will power off directly. If not close the console, press Home button for 10 seconds to power off.

Working on PS4

Basically Function: Fully support all functions in games, including digital/analog buttons, and LED color display function, vibration function.

Colorful LED Display

Searching Mode	White LED keeps blink
Disconnect	White LED keeps light
Multi-user	Different colors for multi-user
Charging when standby	Orange LED keeps light, LED light power off after full charging.
Charging when playing/connected	Blue LED keeps light
In game	LED color based on game`s instruction

Connect To Console

First time connect to the console or another PS4 system:

Connect your wireless controller to your system using the USB cable, and then press the Home button.

Your controller pairs with your system and turns on.

Note

- You`ll need to pair a controller via the charging cable when you use it for the first time and when you use your controller on another PS4 system. If you want to use two or more controllers, you must pair each controller.
- After you`ve paired your controller, you can disconnect the USB cable and use your controller without wire.
- It`s possible to use up to four controllers at the same time. When you press the Home button, the light bar glows in your assigned color. The first controller to connect is blue, with subsequent controllers glowing red, green, and pink.
- Re-connect to console paired before:
- Power on console, and power on the game controller by press Home button for 1 second, controller should connect to console automatically.

Connect the mono headset

For in-game voice chat, plug the mono headset into your controller`s stereo headset jack.

Share your gameplay online

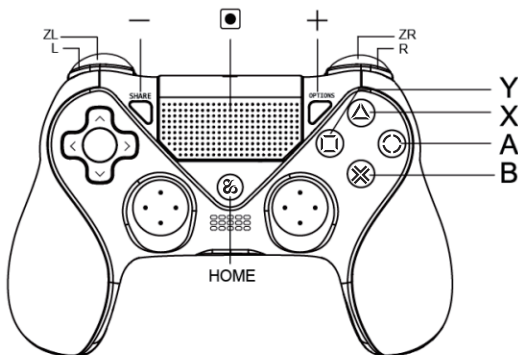
Press the SHARE button and choose one of these options for sharing your gameplay online.(Follow the steps on screen)

Working on PC

This controller is plug and play to work on PC, just connect the cable and you can work it fine.

Working on Switch

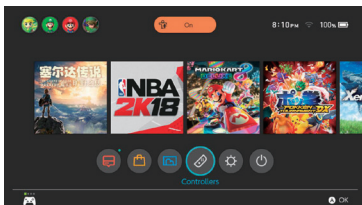
The buttons corresponding on Switch.



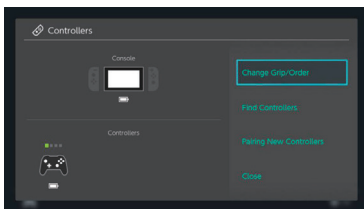
Please follow below three steps to setting controller(for the first time to use the controller should do like this).

Console pairing interface

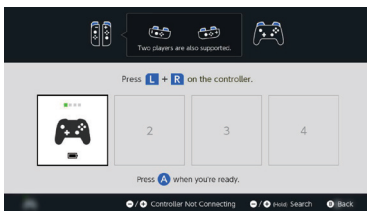
1



2



3



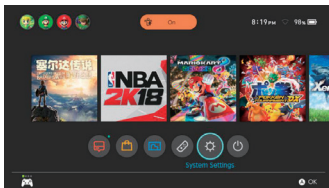
Press "Home"+ "Options" Buttons simultaneously 3 to 5 seconds to step into bluetooth searching mode.

The four LEDS flashing and will be keep light when it connected.

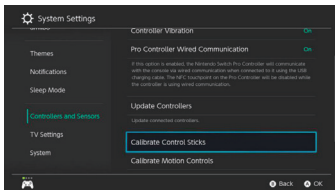
PS: Please be sure when u play the controller, the console is power on and already for the newest verison.

Console pairing interface

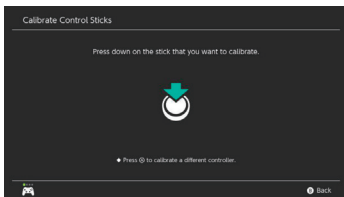
A. Press Home button to Main interface and then choose the system settings



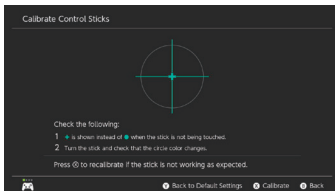
B. Press A button step into the below interface and choose calibrate control sticks



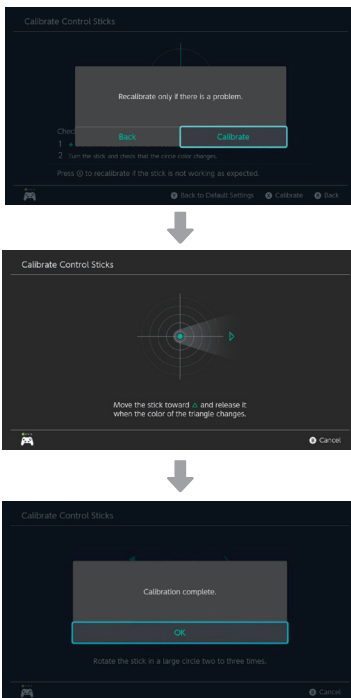
C. Press A step into below interface



D. Then press 3D (L3/R3) step into below interface



E. And then press X button step in to calibrate interface, and do actions based on the remind



Note

- 1.Reconnect Mode:Press Home button for 1s to wake up the controller to reconnect. If can't reconnect in 10s will keep sleep mode.
- 2.When the gamepad can't connect or can't power on, please charge for 2 hours.
- 3.Press LB+RB for 5Seconds to close all LED light,if need reopen the Led,press 5seconds to Open.

WARNINGS

Warning and Safety Instructions:

- **Do not attempt to repair** Do not attempt to disassemble, open, repair or alter the products, its accessories, or the power cable. You could electrocute yourself to other hazards. Any signs of attempts to open and/or alter this device, including removing or tearing a sticker, will void the warranty.
- **Not use near liquid** To reduce any risks of fire or electric shock, do not use this device near liquid and do not expose it to rain or moisture. Do not attempt to dry the device with a hair-dryer or microwave oven.
- **Risk of asphyxiation** this device may contain small parts, plastic bags or packaging that could represent a risk of asphyxiation for children. Keep all small parts, bags and packaging out of the reach of children.

- **Charging-related risks, leads/cables**

Store all cables and leads in a manner that there is no risk of persons or animals accidentally tripping on them or pulling them when moving around the area where the device is located. Do not allow children to play with the cables and leads.

- To avoid any damage to the power cables and the power supply.
- Protect the electrical cables in a manner that no one can tread on them.
- Protect the electrical cables from pinching or excessive bending, in particular when connected to the power plug, power supply unit, or the device.
- Do not pull abruptly on the power cables, do not bend them too tightly and not mistreat them in any other way.
- Do not expose the power cables to heat sources.
- Keep the power cables out of the reach of children and animals. Do not allow them to bite or chew them.
- When disconnecting the power cable, pull on the plug. Do not pull on the cable.
- If a power cable or power supply unit is damaged in any way, stop using it immediately.
- Disconnect your device during storms or if not used for extended periods of time.
- For devices provided with a mains power cable that connects to the power supply unit, always follow the instructions hereafter when connecting the power lead: connect the power cable to the power supply unit by fully engaging it, then connect the other end of the mains lead to the wall

