

Important Tips

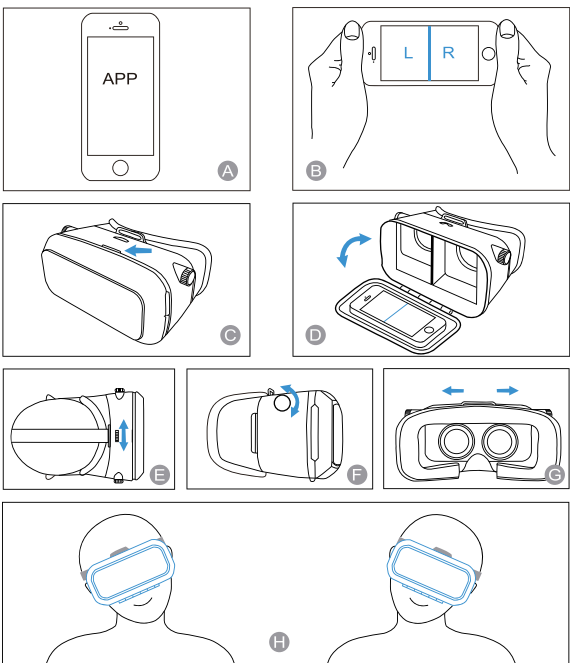
1. Download "VR Games" Apps or "3D Split Screen" Videos to your smartphone. Based on the game menu to select installation a video player or game software, test if it supports Left-and -Right split screen display and full-screen display. (Picture A,B)

[You can search the 3D split screen videos on YouTube, Dual Play, SimulView and also search "vr player" on google play.]

2. Lens Adjustment

- ①PD adjustment: Adjust the PD of Lens (Picture E)  
②Object distance adjustment can adapt myopia (in 600 degree) without wearing myopia lens.(Picture F)  
③Focal adjustment: For the best clarity, you can adjust the lens focal length from left and right.

3. Wearing on head (Adjust the straps for suitable tightness), then you can enjoy the 3D-effect  
①Put the mobile phone into the device, you can choose the video screen by shaking your head from left and right in the video list (Picture H)  
②VR games: playing 3D games also can be controlled through the boby sensuous (Picture H)



Specification

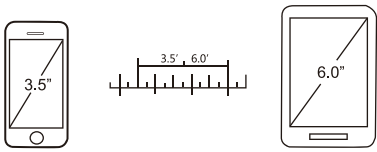
Name	VR BOX
Material	Plastic (ABS)
Fit for	3.5-6 inch Phones (less than 154 x 82mm)
Lens	Spherical resin
Angle	80-95 degree
Focal adjustment range	55-65mm/ 2.1-2.5 in
Object distance adjustment range	10mm/ 0.39 in
Weight of the 3D vr glasses	380g
Support	Myopic in 600 degree
Color	Black
Video Input	Cell phone

How to use

1. Put your smartphone in.  
2. Then open the 3D apps/games/movies.  
3. Close the 3D glasses.  
4. Put the 3D glasses on your head.  
5. Adjust the lenses to suit your pupils, make sure the screen is clear and you feel comfortable.

Compatible

Virtual Reality glasses is compatible with 3.5-6.0 inch Smartphones (Lmax: 154mm; Wmax: 82mm)



Notes

- \* Don't use it when charging the phone.
- \* In order to improve the viewing comfort,we suggest that the angle of back and sear is 60°.
- \* In order to protect your version,it is recommended that the viewing time should not be more than 30 minutes. If you feel dizzy or sick,stop for a moment.
- \* Pregnent women,high blood pressure,and fear of heights crowds,don't use it.



Bluetooth Remote Controller Operation manual Android

A: Music Mode-Video Mode

- 1: @+A is for Music Mode. The joystick switch and adjust the volume. A for pause or play; C/D for volume.  
2: Some brand mobile phones support video playing in music mode. A for play, pause and long press for fast forward.

B: Game Mode(Landscape)

- 1: @+B is for landscape gamepad game mode. The direction is controlled by the joystick. D for shooting, A for taking off. It depends on keyboard of different brand mobile phone.

C: VR Mode Self-timer Mode, Video Mode

- 1: @+C switches to VR Mode. When playing game , the direction is controlled by joystick, the front side key for shooting and taking off.  
2: @+C switches to Selfie Mode. Some brand mobile phones possibly do not support selfie. Mouse Mode selfie is advised to be switched by @+D.  
3: @+C switches to Video Mode when the joystick control fast forward, fast backward. Some brand mobile phones possibly do not support volume control.

D: Mouse Mode, Selfie Mode

- 1: @+D switches to Mouse Mode when the joystick controls mouse, C/D for volume and A/B for confirm and quit.  
2: When some brand mobile phones do not support operating in selfie mode, the mouse mode is suggested.

E: Apple IOS System

It needs to switch the key to IOS position to connect iphone. C for slefie, C/B for volume up or down, A for mute.

G: Please open the battery cover to check the simple operation instruction.

Check the bottom of battery cover for simple application operation.

Technical Parameters

Size: 118*33*42mm
Wireless Protocol: Bluetooth 3.0 compliant
Support System: Android/IOS/PC
Support Game: Android/PC(Gamepad)
NES/GB/SMDX/GBC/N64/MAME; Android APK, Game Apple/IOS: Icade Game
CPU: ARM968E-S COER
Battery: 2 pcs AAA battery RO3 1.5V
Working Current: 0.5-8mA
Standby Current: 0.5-1mA
Shutdown Current: 0
Continuous Game Time: about 40-120h

FAQ

1. Low battery may cause the joystick not sensitive. Please replace the battery.  
2. When it fails in connection with the Bluetooth pairing. Please restart your cepphone to connect again.  
3. Using the WIFI will affect the Bluetooth connection.  
4. Bluetooth gamepad is designed for the standard Android system. If some brands of mobile phone keyboard settings may be non-standard Android keyboard, please select @+any key of A, B, C, D to test.  
5. If crash, please unplug battery and put it on.  
6. Support games: Such as Angry robot, Hatsune Miku, the PC version of Eternity Warriors and so on.

